



First Mennonite Church
7300 Holdrege
Lincoln, NE 68402
www.fmclincoln.org
402-467-1526

Guidance Created 6-16-2020
Updated 5-12-2021

FMC Safe Worship Guidelines

1. Worship Service

1.1. Continue to offer online Zoom service

Continue offering online worship options for those who are sick, higher risk, have been exposed to a coronavirus (COVID-19) patient within the last 14 days, have interacted extensively with other people, or are otherwise uncomfortable gathering in person.

1.2. Masks

1.2.1. Masks worn as directed by the current Directed Health Measure

1.2.2. Offer masks for visitors

1.3. Maintain Distance

1.3.1. Maintain a safe distance in sanctuary space with one family unit per pew; keep empty pews between families, as directed by the current Directed Health Measure

1.4. Singing is allowed with masks

1.5. Children present at services should remain with their parents or guardians unless, at the parent's discretion, they allow non-family children to sit together with masks.

1.6. Hymnals may be used

1.7. Offering

1.7.1. The Offering plates will not be passed. Placed a plate/box at door of sanctuary.

1.8. Microphones

1.8.1. Place microphones in stand OR have ushers or other adults hold microphones with gloves

1.9. Tech Deck

1.9.1. Make a Tech Deck schedule to make sure all services are covered.

1.9.2. Tech Deck is made up of 2-3 people:

1.9.2.1. Proclaim

1.9.2.2. Camcorder for sharing service to Zoom

1.9.2.3. Soundboard

1.9.2.4. Zoom Host will mute and spotlight

2. Fellowship Hall

2.1. Maintain a safe distance between groups in the Fellowship Hall as directed by the current Directed Health Measure.

2.2. Fellowship Hall will be open to gather after the service, as long as masks are worn and social distancing is observed.

3. Building

3.1. Post Covid-19 info

3.1.1. Post signs regarding social distancing, safety measures and handwashing.

3.1.1.1. Entry (Appendix A on page 5)

3.1.1.2. Sanitizer & Mask Station (Appendix B on page 6)

3.1.2. Communicate the plan and make it available to members and non-members alike (post signs inside/outside building, website, email, etc).

3.2. Doors

3.2.1. Prop open interior doors prior to the service

3.2.2. Offer sanitizer inside doors that cannot be left open (front door in cold weather)

3.3. Provide hand sanitizer & masks

3.3.1. Provide hand sanitizer and/or hand wipes prior to entering the church and throughout the building.

3.3.1.1. Maintain a good stock of tissue, soap, hand sanitizer and disposable paper towels for drying hands.

3.4. Cleaning requirements

3.4.1. Follow established frequency and processes for cleaning and disinfecting, paying extra attention to high-touch surfaces.

3.4.2. Ensure cleaning supplies and disinfectant have been ordered and are on hand.

3.5. Food/Beverages

3.5.1. No potluck

3.5.2. No coffee/snack time will be served inside the church

3.5.3. Outside beverages are allowed (adhere to mask guidelines) ex: Bring your own coffee/water bottle.

3.6. Sunday School

3.6.1. Sunday School and Small Groups may use the rooms, while keeping a safe distance between family groups as directed by the current Directed Health Measure.

3.7. No handshakes, hugs, or other physical contact while inside the building – use sign language

3.8. Restrooms

3.8.1. The restrooms will be available.

3.8.2. Provide soap/sanitizer before and after restroom use.

3.9. No Nursery

3.9.1. The cry room at the back of the sanctuary will be available for toddler and infants' needs, such as diaper changing, etc.

3.9.2. The nursery will not be staffed by the congregation. It is at the parent's discretion to use the nursery during church.

3.10. Fellowship Hall tables/chairs

3.10.1. Chairs will be placed for safe social distance as directed by the current Directed Health Measure

3.11. Building closed to outside use

3.11.1. No weddings or meetings for non-members.

3.11.2. Building use for members should be church related activities and does not coincide with activities already scheduled. The church with the pastor for availability.

Revisit these guidelines when new County Directed Health Measures (DHMs) are released, or when the Risk dial changes colors.

Attention Visitors

Welcome to First Mennonite Church

We're glad you came to worship with us. In order to keep everyone safe and healthy, please abide by the following:

If you feel sick or live with someone who is sick, please continue to worship with us from home over Zoom.

Masks are required to be worn at all times based upon the current Directed Health Measure.

Please sit with your immediate family members in the sanctuary and leave a safe distance between family groups as directed by the current Directed Health Measure.

Please make use of the Hand sanitizer and Masks available.

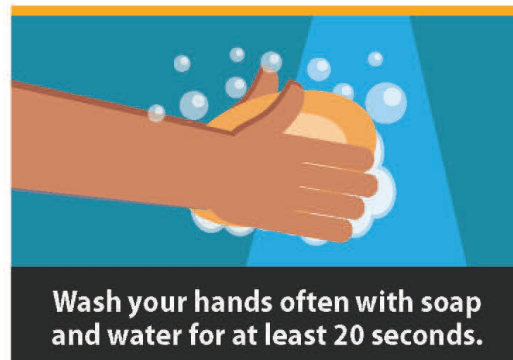
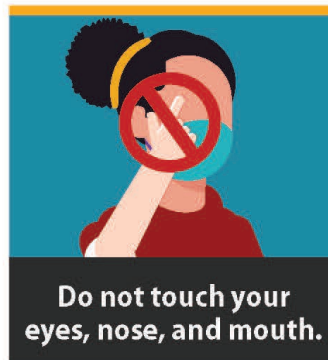
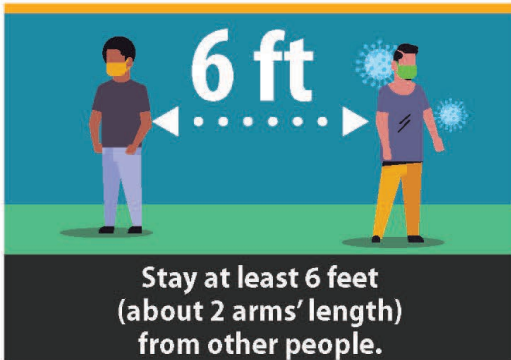
No handshakes, hugs, or other physical contact while inside the building – use our new sign language.

Children present at services should remain with their parents or guardians unless, at the parent's discretion, they allow non-family children to sit together with masks.

The nursery will be available at this time, however, it will not be staffed by the congregation. It is at the parent's discretion to use the nursery during church. The cry room at the back of the sanctuary will be available for toddler and infants' needs, such as diaper changing, etc.

Stop the Spread of Germs

Help prevent the spread of respiratory diseases like COVID-19.



cdc.gov/coronavirus